

CHIMEX 125

Cement-Acrylic Based, Two Component, Semi-Elastic Waterproofing Material



Description

CHIMEX 125 is a cement-acrylic based, two-component, semi-elastic insulation material used on concrete and cement based plasters and applied from the inside and outside against leaking and surface water.

Fields of Application

- In water pressure exposed areas like pools, water tanks and in wet volumes such as terrace, balcony, basement.
- In building foundation, retaining wall, indoor and outdoor for vertical and horizontal applications.

Features and Benefits

- It forms a water impermeable layer under screeds and ceramics with high adhesion performance and semi-elastic properties
- Forms a jointless, seamless, permanent, water impermeable coating
- Safely used in drinking water tanks
- Water vapor permeable
- Easy to apply
- Long working time
- Resistant to chemicals and salt solutions in soil

Technical Data

Content	Component A: Polymer modified admixture and special cement Component B: Copolymer acrylic dispersion
Color	Gray
Mixing	20 kg A component : 5 kg B component
Mixture Density	1,90 g/cm ³
Adhesion Strength	≥1,50 N/mm ² (28 days)
Resistance to Pressurized Water	2 bars positive
Capillary Water Absorption	<0,10 g (after 4 hours) (TS EN 12808-5)



Usage Period	2 hours
Maturity Period	3-5 minutes
Application Temperature	+5°C to +25°C
Service Temperature	-20°C to +80°C
Application Tools	Brush
Drying Time	
Mechanical Strength	2 days
Water Impermeability	7 days
Topcoated by plaster/ceramic	3 days
Final Strength	14 days
HS Code	3824.99.70.00.00

Preparation of Substrate

The application surface must be durable, clean and clean off materials which prevent bonding, such as dust, oil, rust and remove loose pieces. Big pores and cracks should be filled with REPAMERK 1 repair mortar. Application surface has to be wetted and then waited until it becomes wet/dry. After the first coat of CHIMEX 125, sharp tips and horizontal/vertical joints which are suitable cracking should be chamfered with REPAMERK 1 repair mortar or PH 127 then second coat of CHIMEX 125 should be applied.



Application Method

Liquid component B is poured into a clean container and mix at a low speed and then slowly added CHIMEX 125 powder component A. Continue mixing until obtaining a homogenous mixture without any agglomerate (approximately 3-5 minutes).



Mixture should be applied with a brush as 2 or 3 layers. Brush application direction for each layer must be perpendicular to each other. Each layer must be applied after the first layer begin to harden and still wet. Surface should be wetted before second layer. Prepared mixture have to be used within 2 hours. In outer surface applications, the surface has to be protected from sun, wind, frost or rain during the first 24 hours.



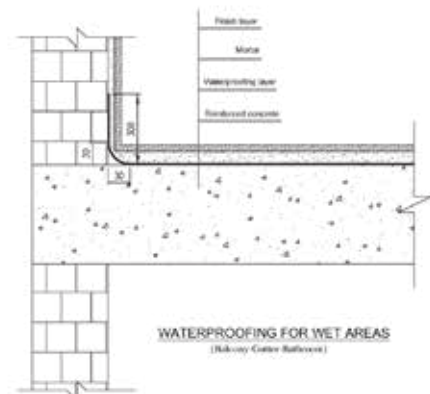
The first layer



The second layer



Surface finish





Consumption

For each layer, approximately 1,0 - 1,5 kg/m² mixture is used. Recommended at least 2 coats application, if needed 3 coats might be applied. Product should be applied as maximum 2 mm wet film thickness in single layer.

Packaging

25 kg set

Powder A component: 20 kg kraft bag

Liquid B component: 5 kg plastic drum

Shelf Life

12 months in original, unopened package.

Storage

Store in dry area between +5°C and +35°C. Protect from heat, freezing and direct sunlight.

Cleanup Information

Clean tools and equipment with water immediately after use. Dried material can only be removed mechanically.

Cautions / Limitations

- It may be harmful with skin contact.
- Do not apply in freezing conditions or during precipitation.
- Protect applied materials from rain, freezing, foot traffic and continuous high humidity until completely dry.
- Do not use when air and surface temperatures are below +5°C and above +25°C.
- The surfaces that will be walked on have to be coated by grout or ceramic.

Health and Safety

Warning! Cause eye and skin irritation. If eye or skin contact, get immediate medical attention.

Wash hands thoroughly after handling. Wear protective clothing, gloves, eye and face protection. Do not eat, drink or smoke when using this product. Take off contaminated clothing and wash it before reuse. Dispose of unused, contents, container and other contaminated wastes in accordance with local, state, federal and provincial regulations.

Keep container closed when not in use. Keep out of the reach of children.